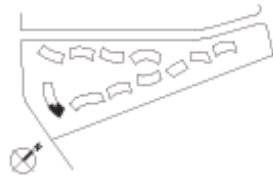
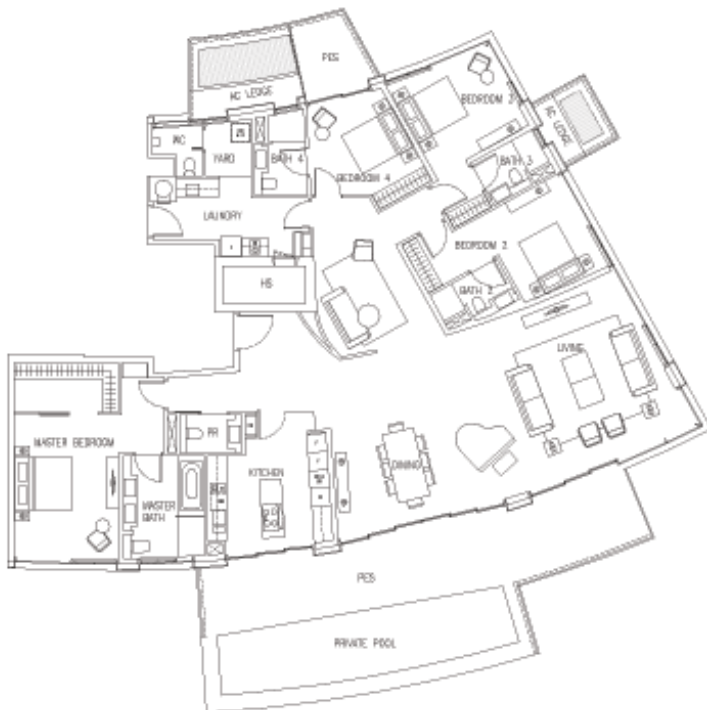


4-BEDROOM (DELUXE) TYPE D2a

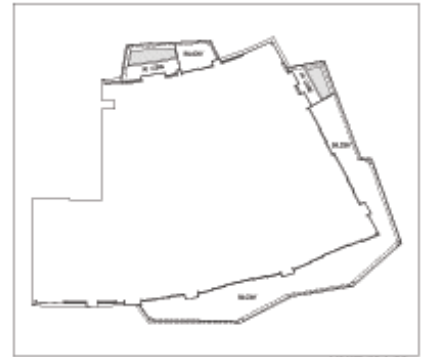
323 sqm to 340 sqm [3477 sq ft to 3660 sq ft]



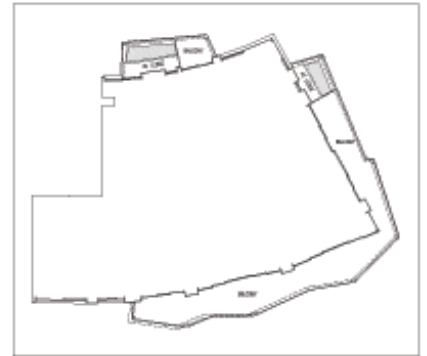
UNIT #02-08



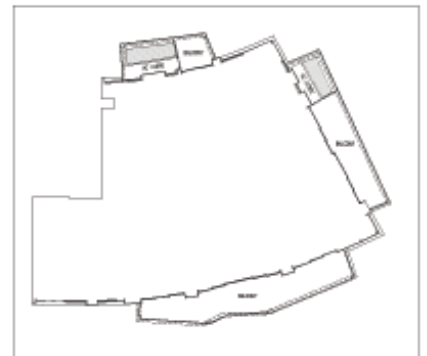
UNIT #01-08



UNIT #04-08



UNIT #03-08



UNIT #02-08

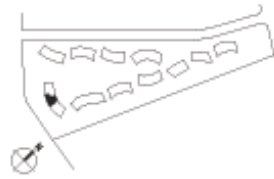


UNIT #01-08

4-BEDROOM (DELUXE)

TYPE D2b

257 sqm to 284 sqm [2766 sq ft to 3057 sq ft]



UNIT #02-09



UNIT #01-09



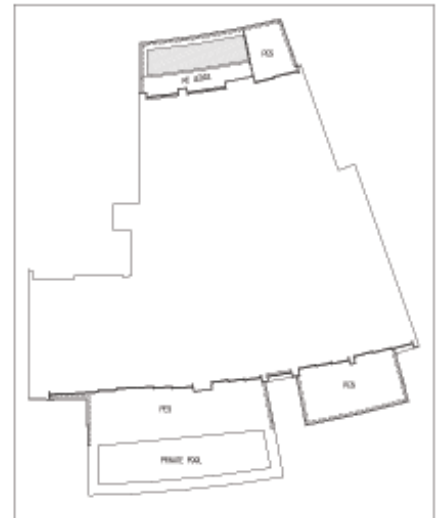
UNIT #04-09



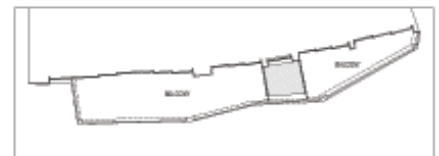
UNIT #03-09



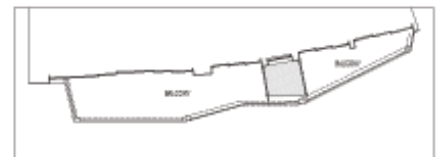
UNIT #02-09



UNIT #01-09



UNIT #02-09



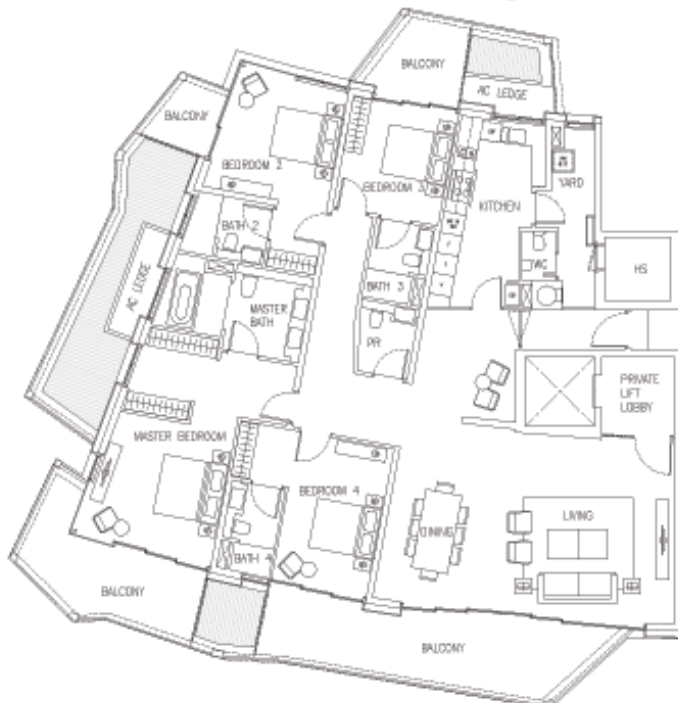
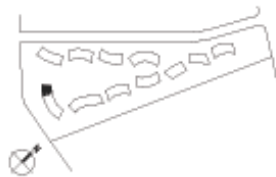
UNIT #03-09



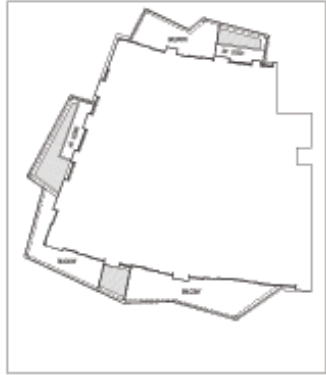
UNIT #04-09

4-BEDROOM (DELUXE) TYPE D2c

276 sqm to 296 sqm [2971 sq ft to 3186 sq ft]



UNIT #02-10



UNIT #04-10



UNIT #03-10



UNIT #01-10



UNIT #02-10



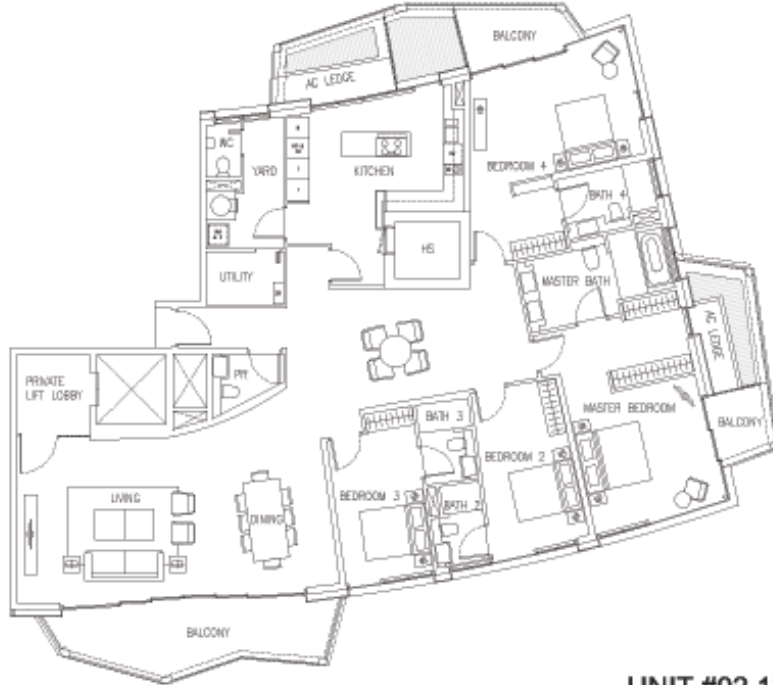
UNIT #01-10

All plans are subject to change as may be required or approved by the relevant authorities. Indicated floor areas are approximate and subject to final survey. Balconies and PES may not be fully covered.

4-BEDROOM (DELUXE)

TYPE D2d

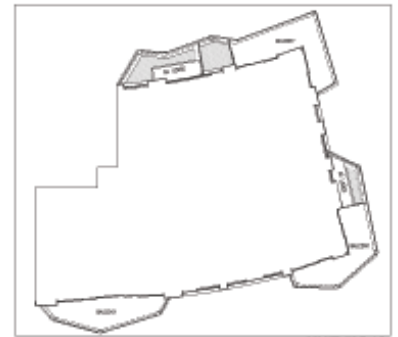
279 sqm to 311 sqm [3003 sq ft to 3348 sq ft]



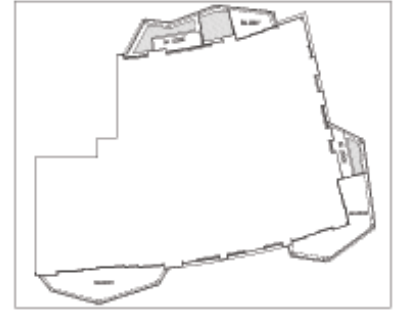
UNIT #02-12



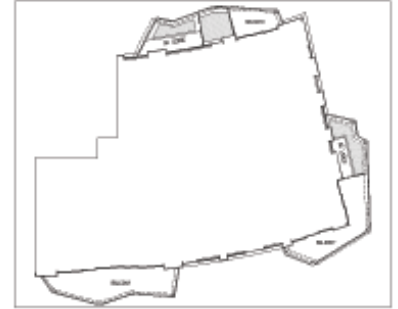
UNIT #01-12



UNIT #06-12



UNIT #04-12



UNIT #03-12



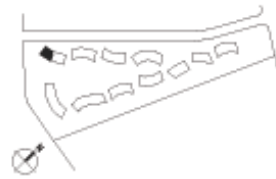
UNIT #02-12



UNIT #01-12

4-BEDROOM (DELUXE) TYPE D2e

275 sqm to 320 sqm [2960 sq ft to 3444 sq ft]



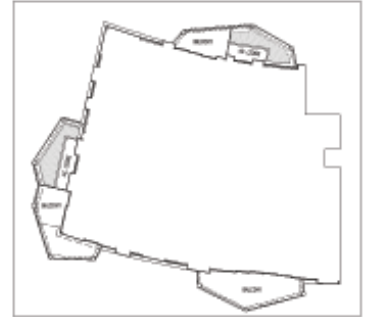
UNIT #02-11



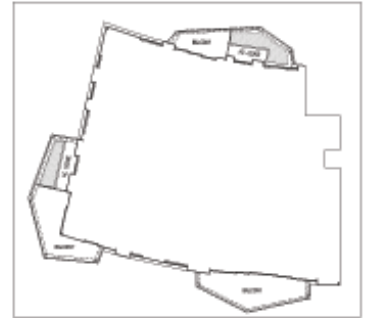
UNIT #01-11



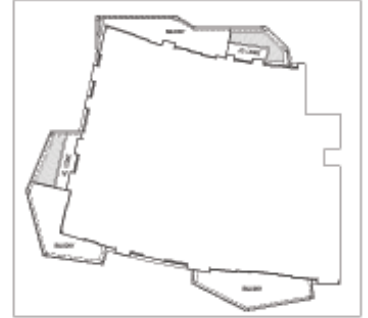
UNIT #05-11



UNIT #04-11



UNIT #03-11



UNIT #02-11



UNIT #01-11